

Cystic Fibrosis Foundation
Greater Illinois Chapter
Staff Directory
P 312-236-4491
F 312-236-2797
Illinois@cff.org
www.cff.org/Chapters/grillinois

Molly A. Riley

Executive Director

mriley@cff.org

ext. 106

From: Westport, CT/Winnetka, IL

Resides: Chicago – Gold Coast

Responsibilities: Foundation Advisory Board,
Corporate Advisory Board, Junior Advisory Board
Major Giving and Annual Fund



Amy Patterson

Associate Executive Director

apatterson@cff.org

ext. 110

From: Galesburg, IL

Resides: Chicago - Wicker Park

Responsibilities: Corporate Advisory Board,
Dinner Dance Program, Great Strides Program,
Grand Chefs Gala, Schaumburg Great Strides



Kellie Fleeman

Associate Executive Director – Peoria

kfleeman@cff.org

309-682-9240

From: Peoria, IL

Resides: Peoria

Responsibilities: Peoria Breath of Life Gala,
Peoria Great Strides, Bloomington Great Strides,
Champaign Great Strides, Decatur Great Strides,
Tuscola Great Strides and Silver Cup Golf Tournament



Cystic Fibrosis Foundation
Greater Illinois Chapter
Staff Directory
P 312-236-4491
F 312-236-2797
Illinois@cff.org
www.cff.org/Chapters/grillinois

Elizabeth Burke-Boskovich

Chapter Director of Operations

eboskovich@cff.org

ext. 114

From: Boston, MA/Wheaton, IL

Resides: Oak Park

Responsibilities: Foundation Advisory Board,
Care Center Program, Annual Fund,
First Look for Charity, Libertyville/Lake Forest
Great Strides, Lake Forest Wine Opener and
daily operations for Chicago and Peoria



Liz Combs Thompson

Sr. Development Director

ethompson@cff.org

ext. 108

From: Evanston, IL

Resides: Chicago - Lakeview

Responsibilities: Corporate Development,
Great Strides Program, Chicago Great Strides
and CF Cycle for Life



Heather Kundert

Development Director

hkundert@cff.org

ext. 113

From: Mitchell, SD

Resides: Chicago - Gold Coast

Responsibilities: Junior Advisory Board,
Festiv-Ale, Casino Chicago,
Chicago Great Strides, Joliet Great Strides
and Team CF Marathon/Triathlon Program



Cystic Fibrosis Foundation
Greater Illinois Chapter
Staff Directory
P 312-236-4491
F 312-236-2797
Illinois@cff.org
www.cff.org/Chapters/grillinois

Kim Mills

Development Director

kimills@cff.org

ext. 101

From: Barrington, IL

Resides: Chicago - Wicker Park

Responsibilities: Grand Chefs Gala,
Northwest Suburbs Wine Event,
Barrington/McHenry Great Strides, Rockford Great
Strides and Liberty Mutual Golf Tournament



Michelle Minardi

Development Director

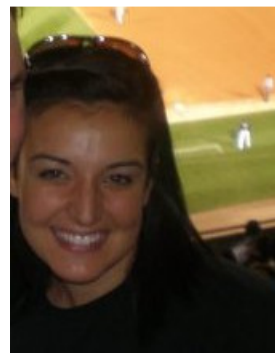
mminardi@cff.org

ext. 111

From: Downers Grove, IL

Resides: Chicago - Lincoln Square

Responsibilities: Breath of Life Gala,
Chicago Great Strides, DeKalb Great Strides,
CF Cycle for Life and CF Climb for Life



David Oshinski

Development Director

doshinski@cff.org

ext. 104

From: Chicago, IL

Resides: Chicago – Edgewater

Responsibilities: Chicago Wine Event,
Naperville Wine Event, Naperville Great Strides
and North Shore Great Strides



Cystic Fibrosis Foundation
Greater Illinois Chapter
Staff Directory
P 312-236-4491
F 312-236-2797
Illinois@cff.org
www.cff.org/Chapters/grillinois

Jacqueline Van Hall

Development Manager

jvanhall@cff.org

ext. 100

From: Grand Haven, MI

Resides: Chicago – Edgewater

Responsibilities: Casino Chicago,
Bourbonnais Great Strides, Hollowayville Great Strides,
CF Cycle for Life and Volunteer Events



Amanda Zar

Development Director

azar@cff.org

ext. 112

From: Los Angeles, CA

Resides: Chicago - Lincoln Square

Responsibilities: Grand Chefs Gala,
I Gotta Guy Sausage Fest, Orland Park/Beverly
Great Strides and Fox Valley Great Strides



Allison Steinhauser

Director of Major Gifts – Midwest Region

asteinhauser@cff.org

ext. 102

From: Tinley Park, IL

Resides: Chicago - South Loop

Responsibilities: Major Giving and Planned Giving
for Illinois, Iowa, Minnesota, Wisconsin,
Indiana and Colorado

